

FOR LEASE

23421 AND 23441 S. POINTE DRIVE



EXCLUSIVELY OFFERED BY:



RUSS SMITH
949.565.5595
rsmith@voitco.com
Lic. #01919442



MATT TURCUTTO
949.310.7280
mturcutto@voitco.com
Lic. #01921491

Voit
REAL ESTATE SERVICES

2020 Main Street, Suite 100, Irvine, CA 92614



PROPERTY FEATURES

- Lush Landscaping and Water Features throughout the Common Areas
- Abundant Free and In-Common Parking Provides Quick, Easy Access to the Office Suites
- Exterior Common Hallways Provide Great Air Circulation in the COVID-19 Era
- Both Buildings are Elevator Served, but also offer Multiple Stairwells for 2nd Floor Access
- Office Suites Range in Size from Approximately 600 – 2,500 SF

CENTRAL LOCATION

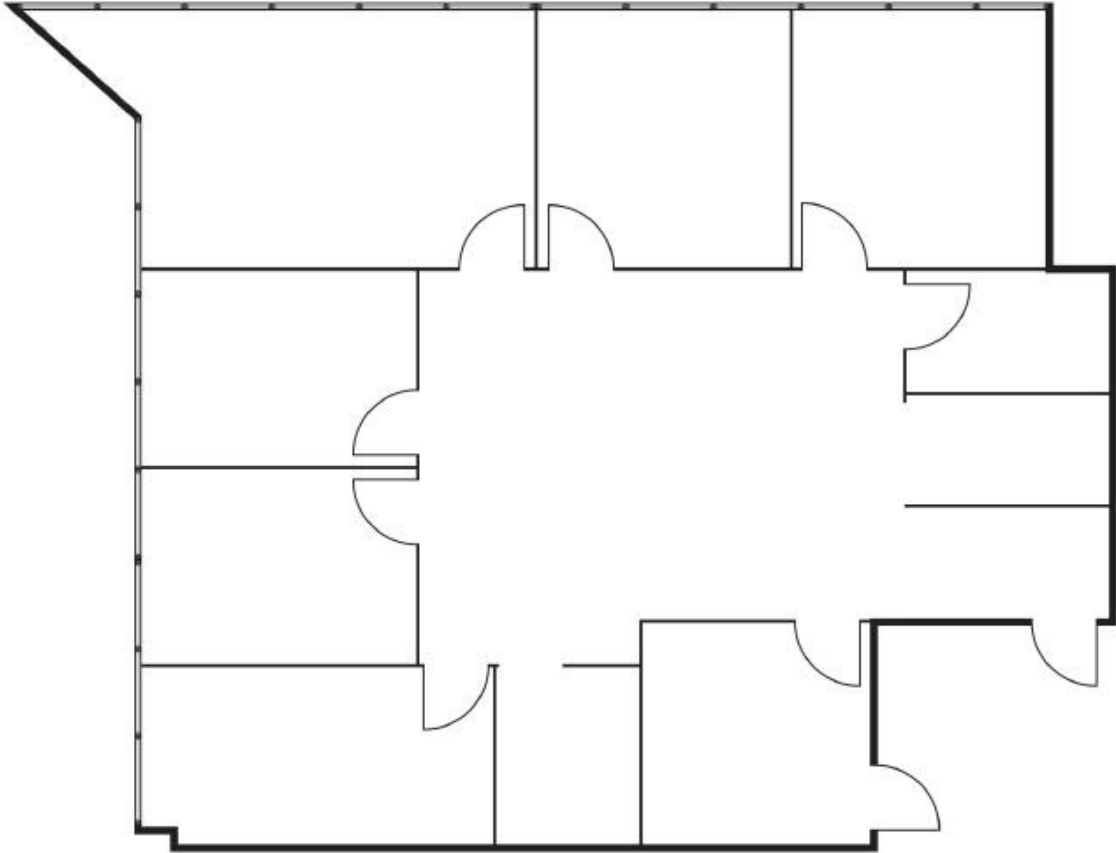
- Convenient Access to the 5 and 405 Freeways
- Retail Amenities and Restaurants within a 10 Minute Walk:
 - Baja Fish Taco's
 - Pizza 900
 - Carl's Jr
 - Coco's Bakery
 - Shell – Gas, Convenience Store, Car Wash
- Retail Amenities and Restaurants within a 5-10 Minute Drive:
 - Spectrum Crossroads – BestBuy, McDonald's, Chevron Extra Mile, Del Taco, Subway
 - Lake Forest Gateway – Starbucks, Panera Bread, Buffalo -Wild Wings
 - Plaza Del Lago – Pita Pita, Moe's Deli, Krazy Eddys Donut Shop
 - Los Olivos Marketplace – Whole Foods, Starbucks, Puesto
 - Irvine Spectrum Center – Retail, Dining, Entertainment

EXTERIOR PHOTOS



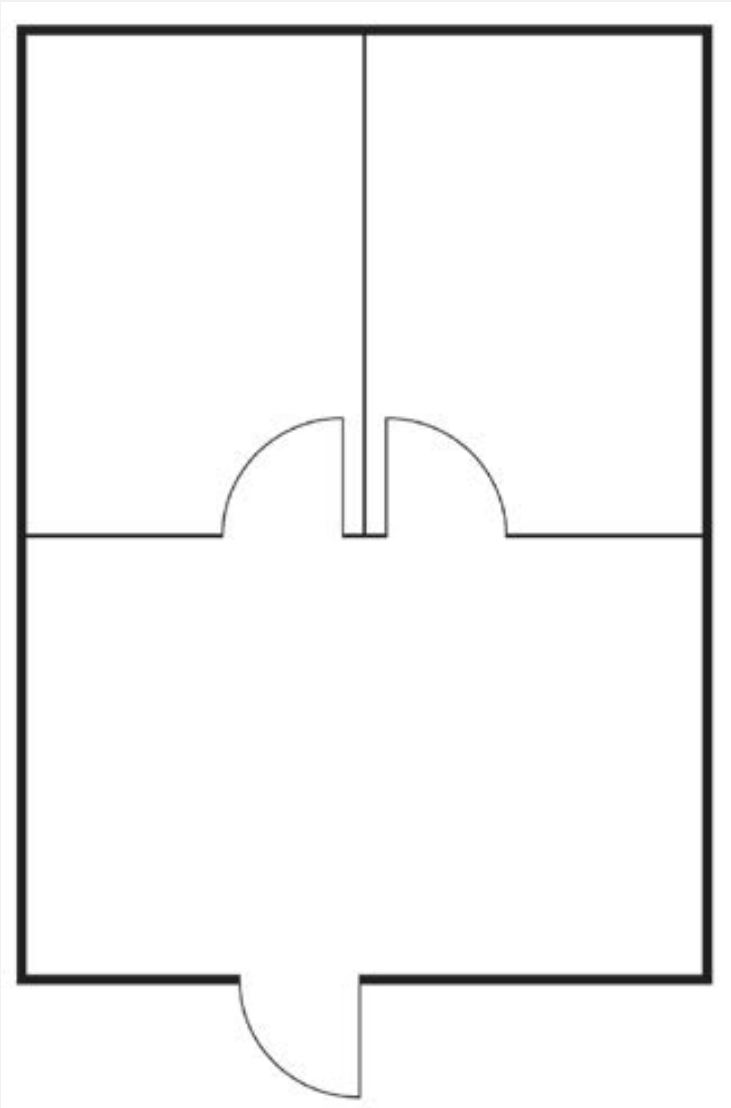
23441 SOUTH POINTE DRIVE

SUITE 205 - 210 ±1,945 SF



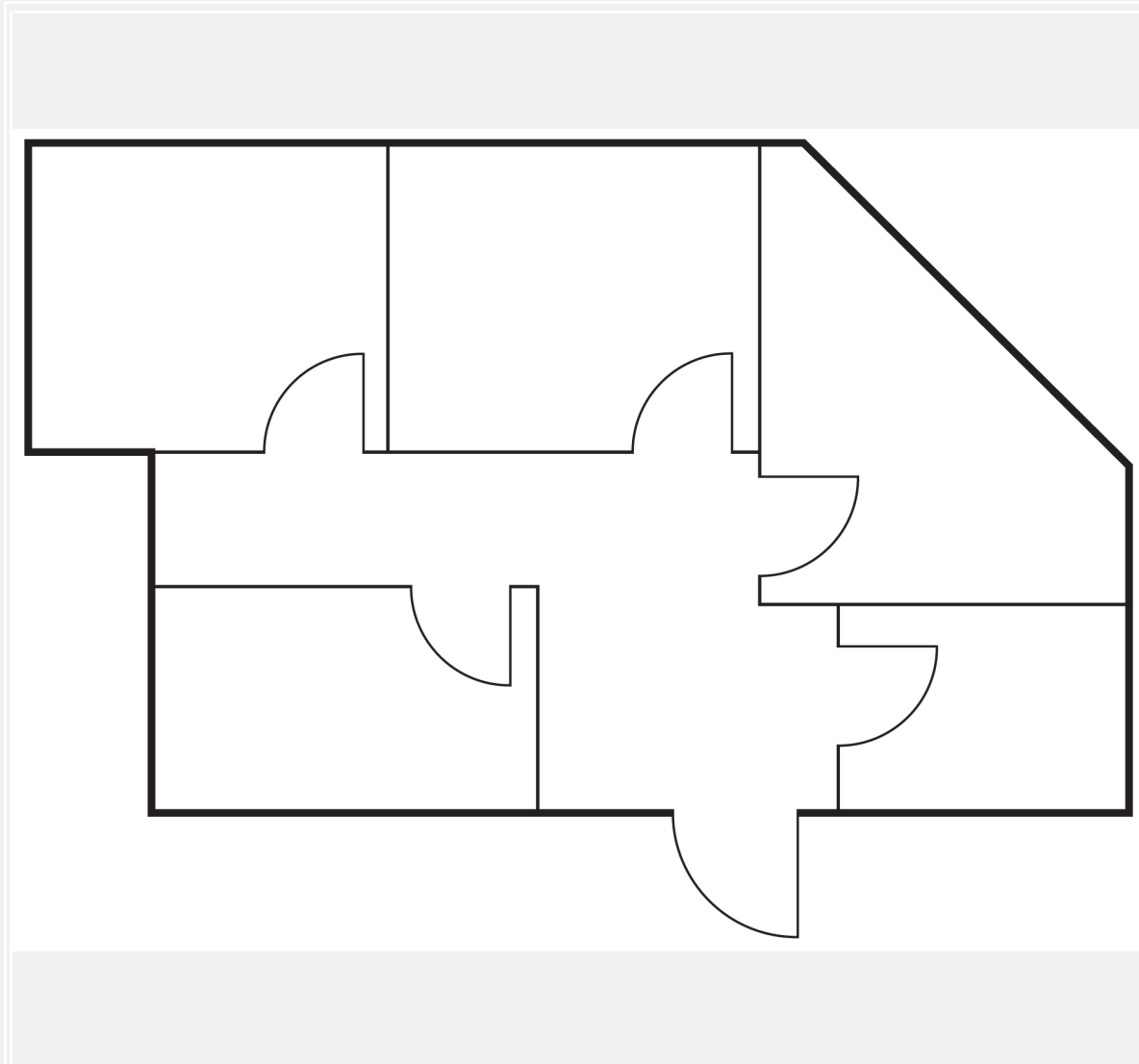
23441 SOUTH POINTE DRIVE

SUITE 260 ±916 SF

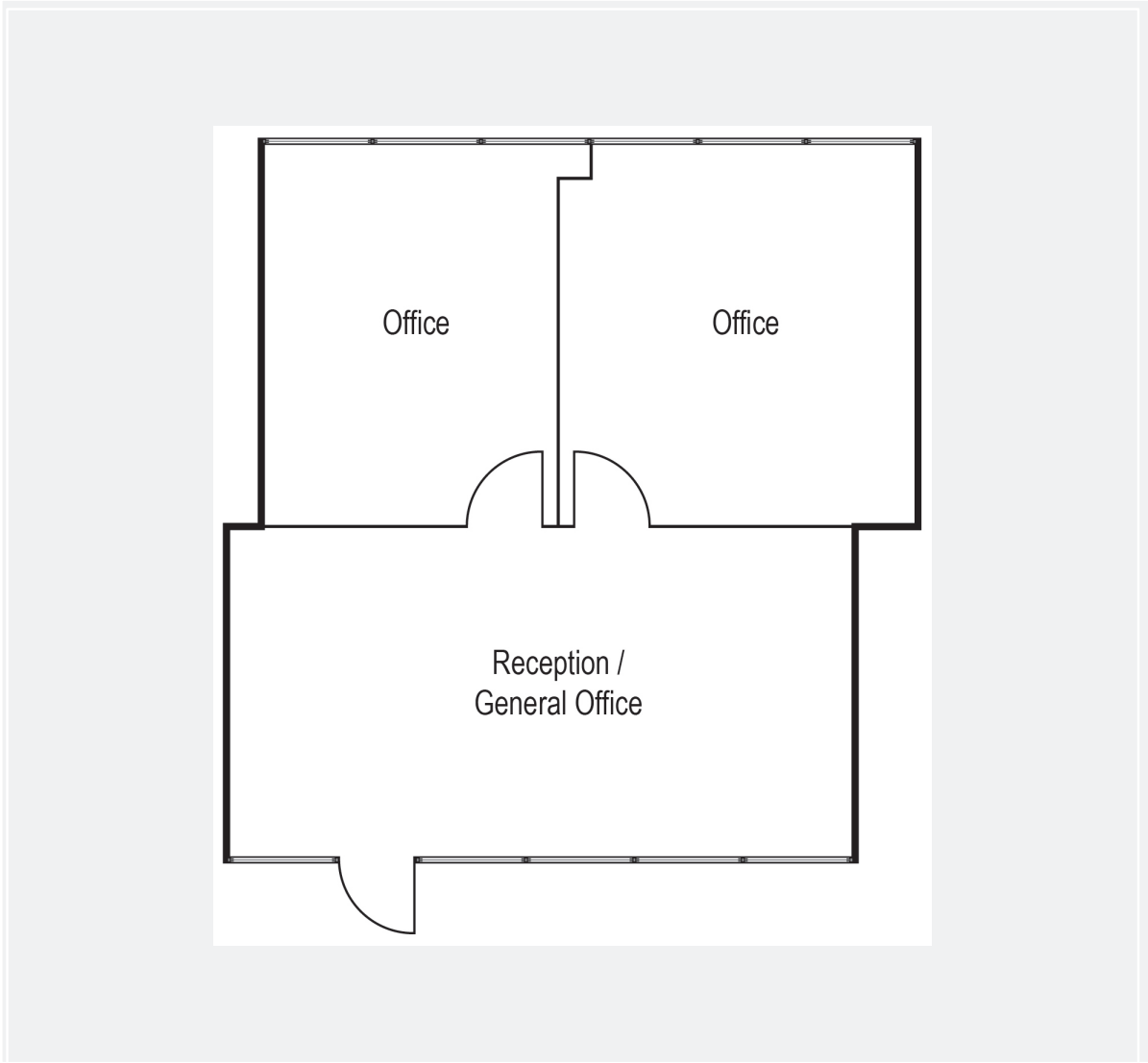


23441 SOUTH POINTE DRIVE

SUITE 90 ±1,107 SF

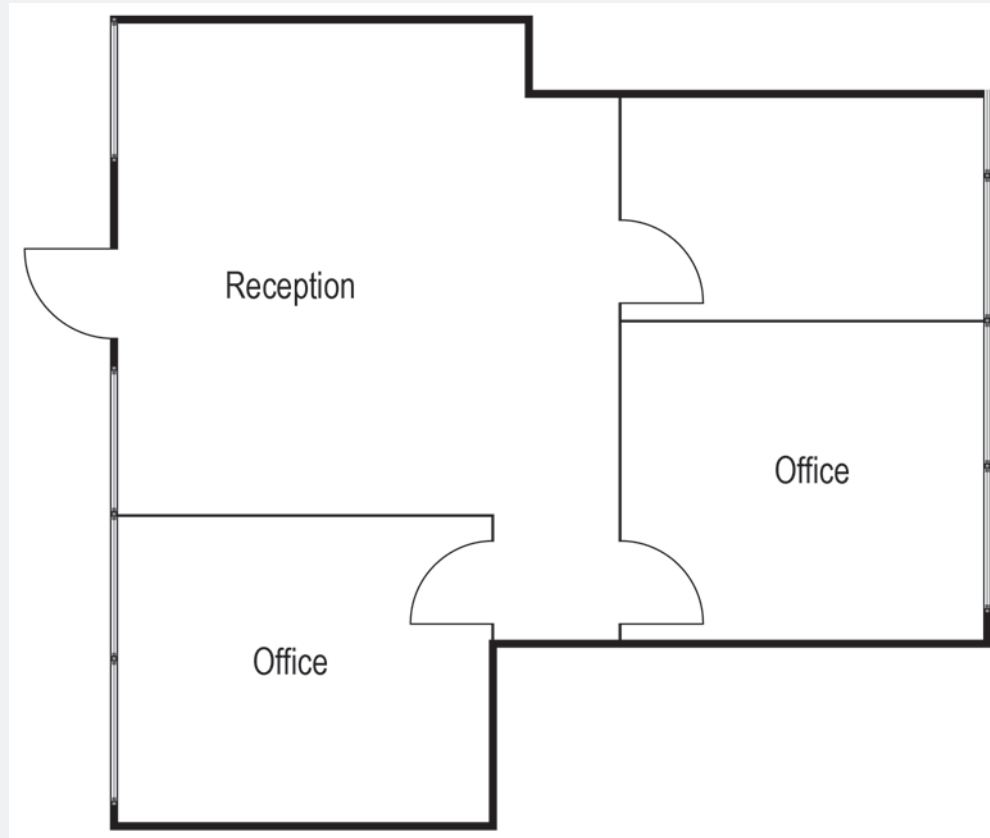


SUITE 280 ±795 SF



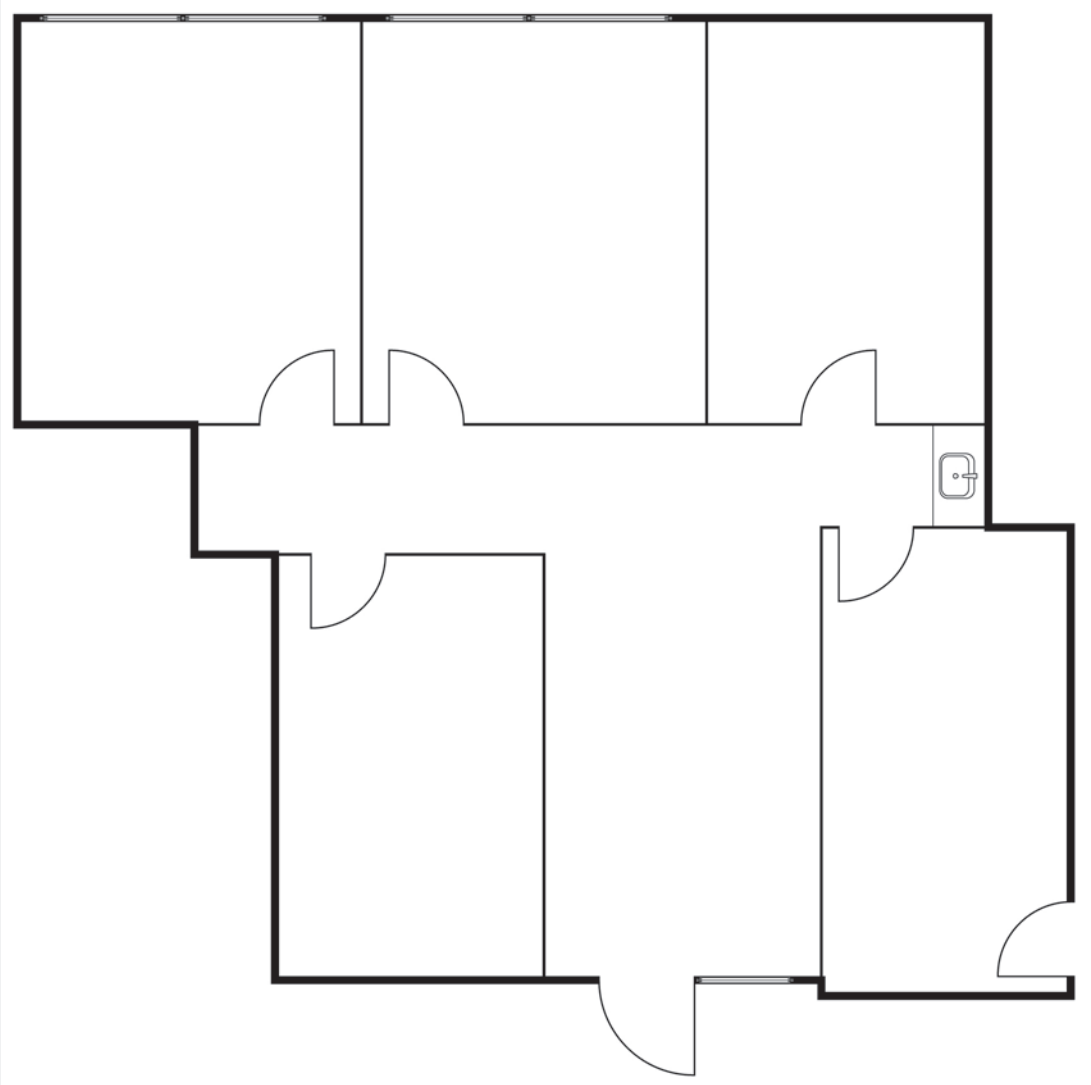
23421 SOUTH POINTE DRIVE

SUITE 280 ±784 SF



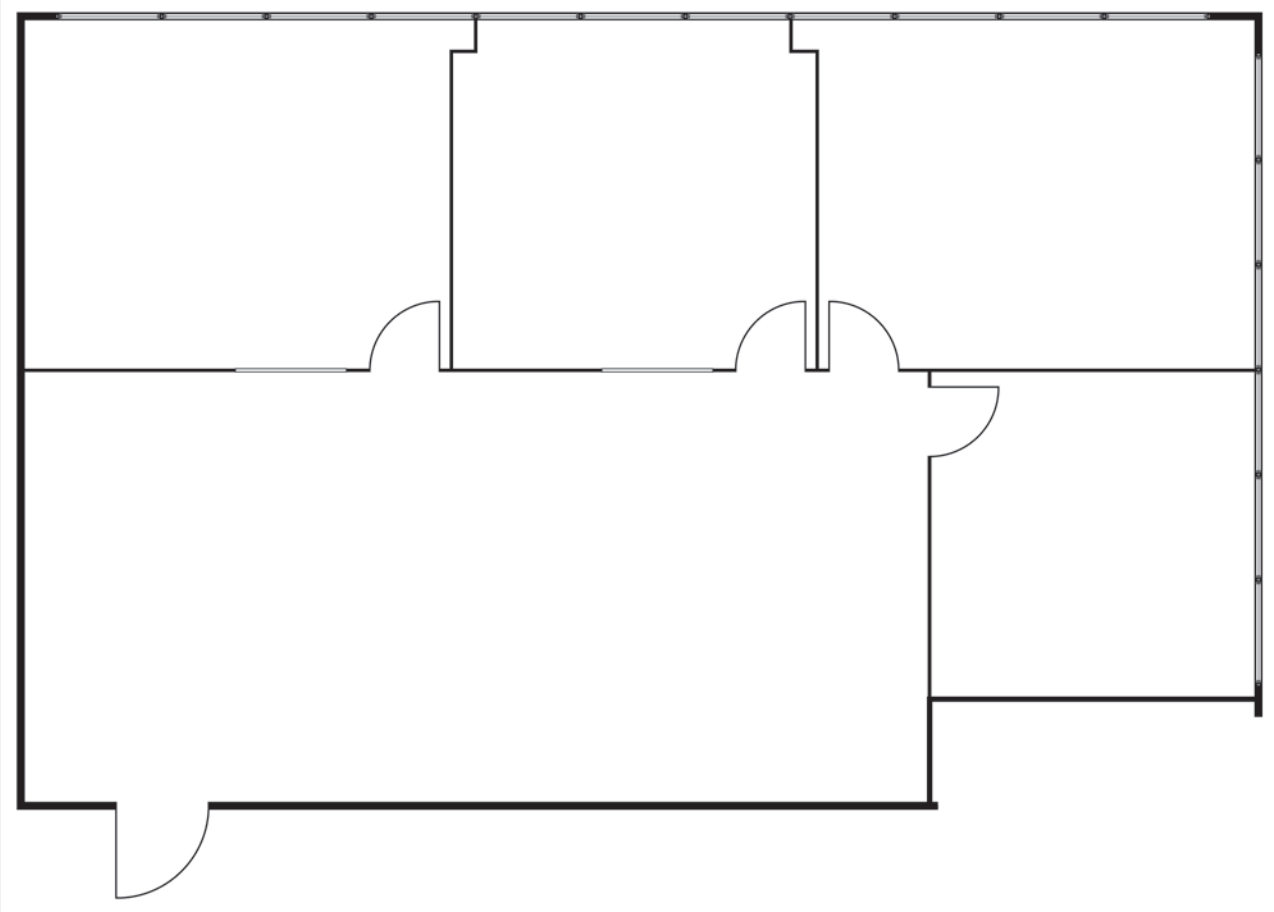
23421 SOUTH POINTE DRIVE

SUITE 275 ± 1,197 SF



23421 SOUTH POINTE DRIVE

SUITE 190 ±1,404 SF



FOR LEASE

23421 AND 23441 S. POINTE DRIVE



EXCLUSIVELY OFFERED BY:



RUSS SMITH
949.565.5595
rsmith@voitco.com
Lic. #01919442



MATT TURCUTTO
949.310.7280
mturcutto@voitco.com
Lic. #01921491

Voit

REAL ESTATE SERVICES

2020 Main Street, Suite 100, Irvine, CA 92614